

VAN GEELDER ZONEN



VT-125.g

50
VT-125
0.121

Dipindai oleh
PT. LIPSA

UT-125.76

Diponegoro

No. Kom. 141. 700. 123 VI. / VI

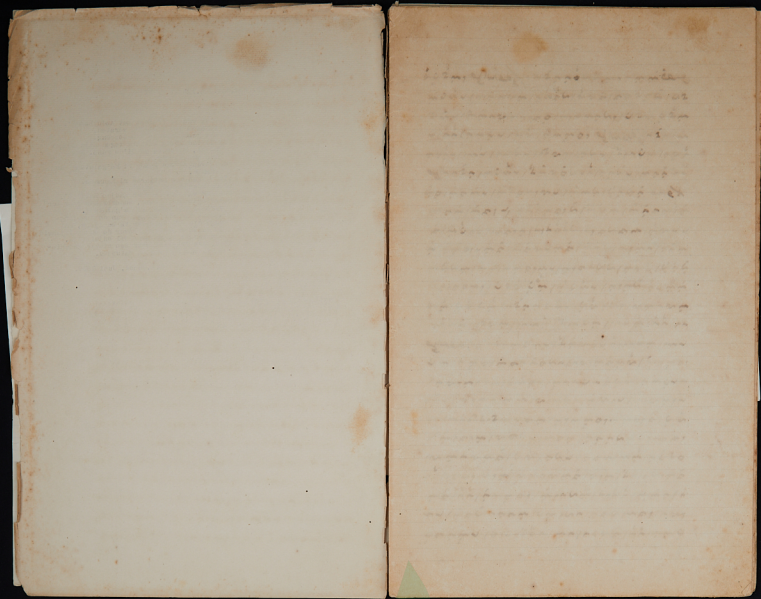
Gezprek van de Prinses met Ibohadda.
Uitgesproken van vroegere vorsten.
Cusische beschiedenis van Sjypong.
Strijd van Arang Tabaka tegen zijn zwager
Tobani, Makipute en Si' do reas, aan
Sona en Sapong.
Waarverhalen van Fwang zi ha'galatang aan
Tawawa.
Uitgesproken van Makipuzi di Komana.
Beschiedenis van 'Sudji'.
Gezprek van Arampusa en Hadjwa Lali'No'.
Doodverhaal van Iliken, overvallen door een
verhaal van Fwang zi ha'galatang.
Fragment van een verhaal van de Koeslanj-
Sidiak. Uitspraak van de Koeslanj, dat
volgde bij Iliken te bejagen, dat
van veracht tegen Sona wil oekijet da.
Sli, een fragment over een strijd geschied-
enis van Sjypong en Makipute.

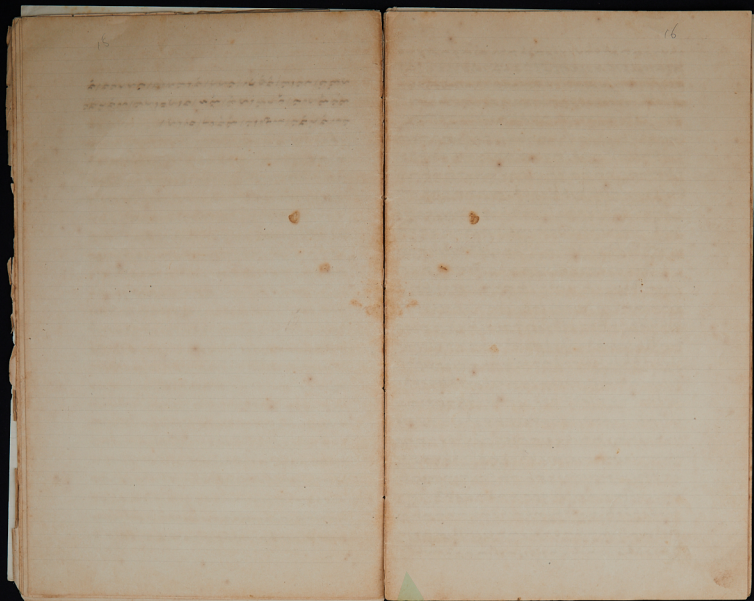
A. A. Dumas, Juni 1880.

Bib. Id : 1000-8806440

Item. Id : 0800 096-02

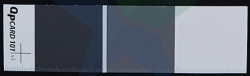
Dumas
1880





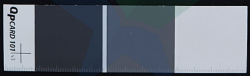
Handwritten text in a cursive script, likely a historical document or manuscript. The text is densely packed and covers most of the page.

Handwritten text in a cursive script, likely a historical document or manuscript. The text is densely packed and covers most of the page.



Handwritten text in a cursive script, likely a historical document or manuscript. The text is densely packed and covers most of the page area.

Handwritten text in a cursive script, likely a historical document or manuscript. The text is densely packed and covers most of the page area.



Handwritten text in a cursive script, likely a historical document or manuscript. The text is densely packed and covers most of the page.

Handwritten text in a cursive script, likely a historical document or manuscript. The text is densely packed and covers most of the page.



Handwritten text in a cursive script, likely a historical document or manuscript. The text is densely packed and covers most of the page.

Handwritten text in a cursive script, likely a historical document or manuscript. The text is densely packed and covers most of the page.



Handwritten text in a cursive script, likely a historical document or manuscript. The text is densely packed and covers most of the page.

Handwritten text in a cursive script, likely a historical document or manuscript. The text is densely packed and covers most of the page.



Handwritten text in a historical script, likely Malay or Indonesian, covering the left page of the manuscript.

Handwritten text in a historical script, likely Malay or Indonesian, covering the right page of the manuscript.



Handwritten text in a cursive script, likely a historical document or manuscript. The text is densely packed and covers most of the page.

Handwritten text in a cursive script, likely a historical document or manuscript. The text is densely packed and covers most of the page.



Handwritten text in a cursive script, likely a historical document or manuscript, covering the left page of the open book.

Handwritten text in a cursive script, likely a historical document or manuscript, covering the right page of the open book.



Handwritten text in a historical script, likely a form of Malay or Indonesian, covering the left page of the manuscript.

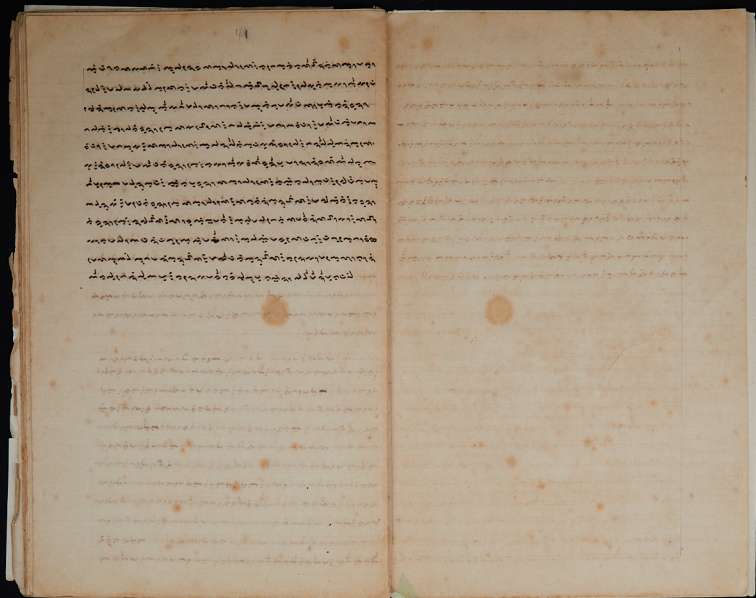
Handwritten text in a historical script, likely a form of Malay or Indonesian, covering the right page of the manuscript.

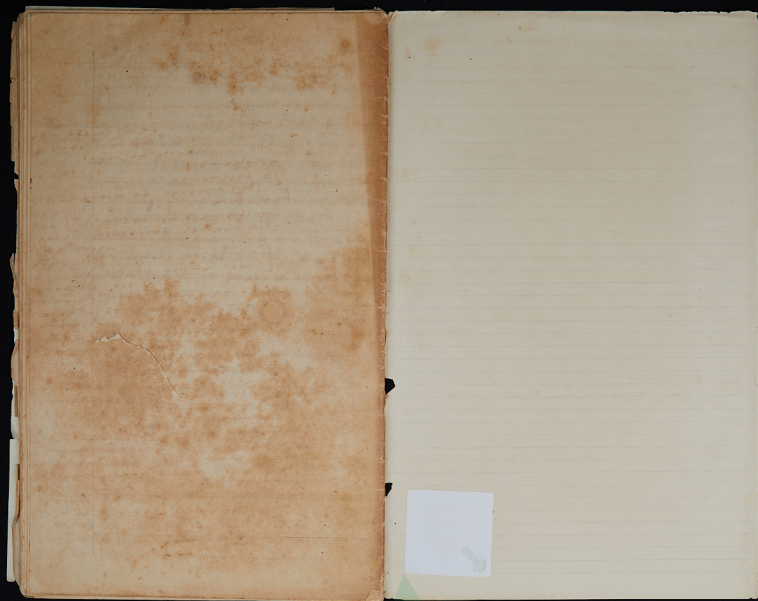


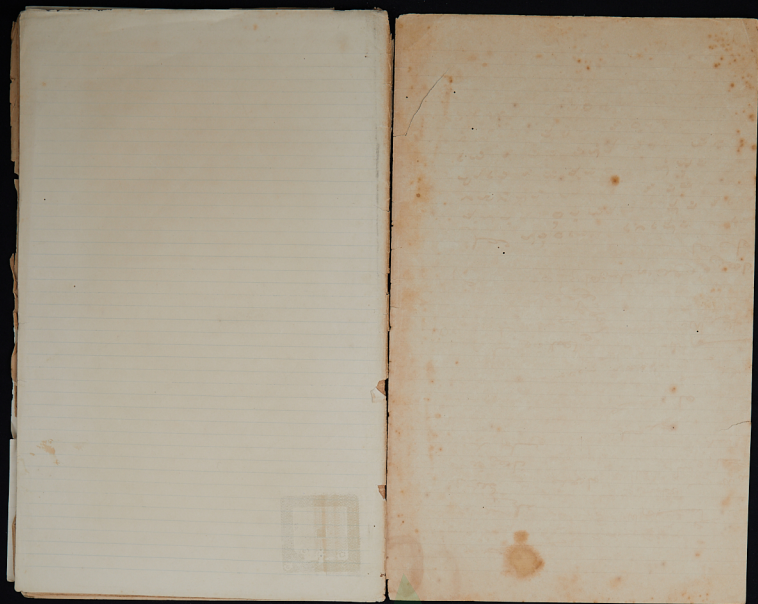
Handwritten text in a cursive script, likely a historical document or manuscript, covering the majority of the page.

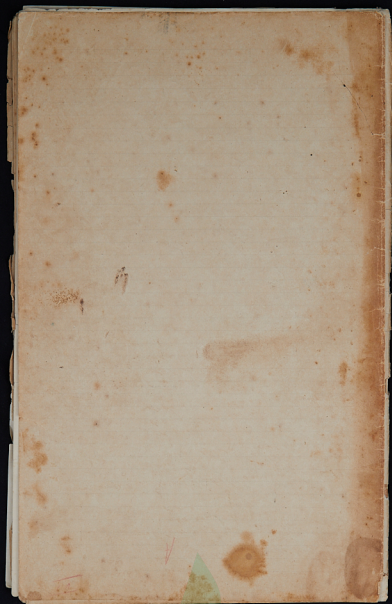
Handwritten text in a cursive script, continuing from the previous page, covering the majority of the page.

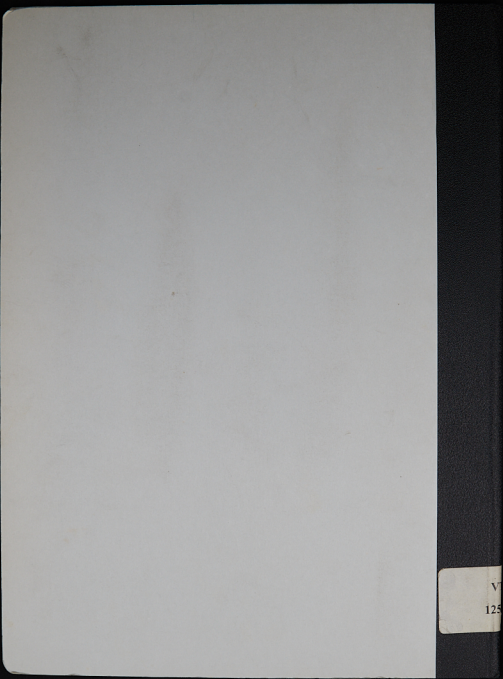












V
125



OpScan 301